



Coppice Row, Theydon Bois, CM16

BUTLER & STAG



# Chestnut Mews is a stunning new development occupying a prime position in the heart of Theydon Bois.



## Leasehold

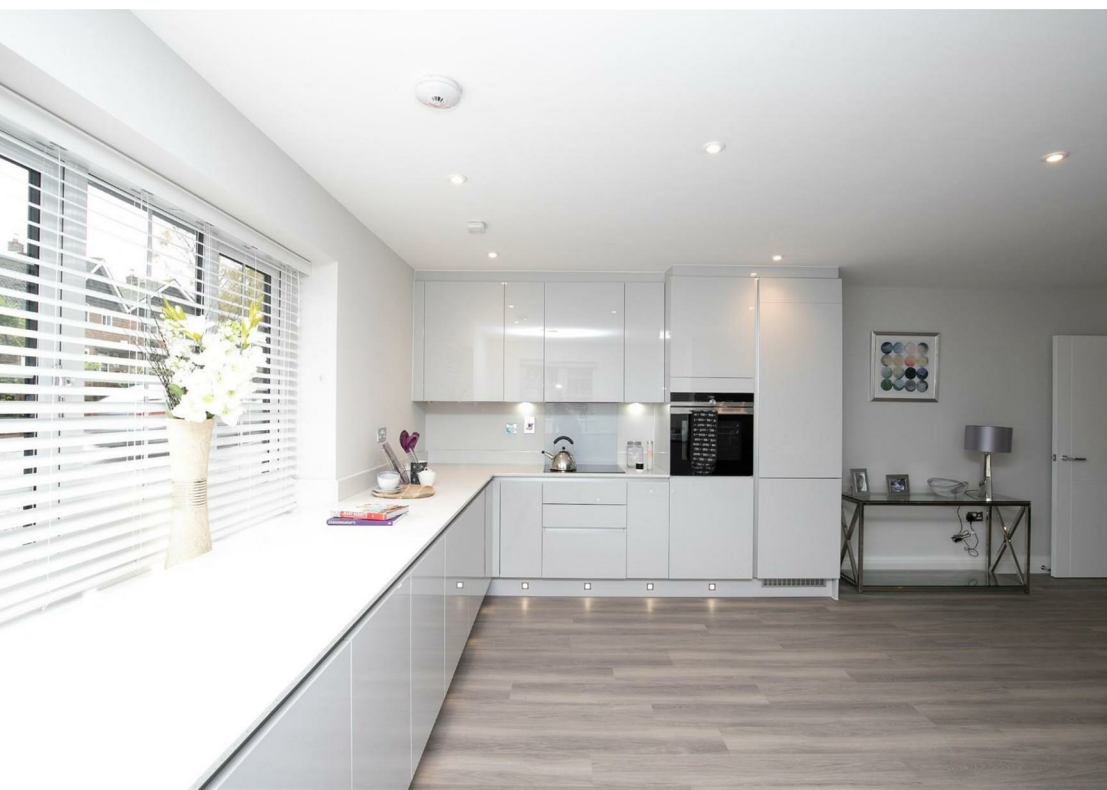
- New Build Development/Ground Floor
- Open Plan Kitchen/Dining Area
- En-Suite To Master Bedroom
- Two/Three Bedrooms
- Allocated Parking
- NHBC New Build Warranty/250 Year Lease

Spanning just over 1200' sq ft of living space this stunning apartment offers a spacious and free flowing open plan lounge/kitchen diner, two double bedrooms with the luxury of both having a en-suite bathroom, with a separate W/C, and the added benefit of a study room with enough space to be used as a third bedroom.

Externally, the property comes with allocated parking, access to a bike shed,

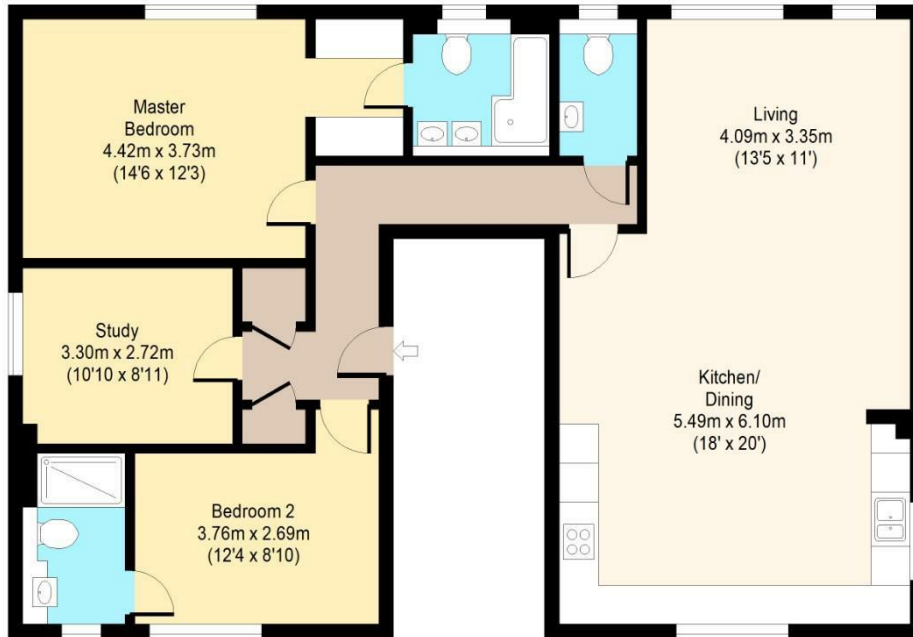
Coppice Row is perhaps one of Theydon Bois' most sought after roads which contains some of the area's finest properties. It lies within easy reach of local amenities within the village. The village is arranged around the green, complete with duck pond, and offers a parade of shops, several pubs and restaurants and easy access into Epping Forest. Transport links into London are excellent and there are several well regarded state and private schools within easy reach. Local leisure facilities include golf courses, sports centres and a tennis club.





**Plot 1,  
Chestnut Mews  
Ground Floor**

Approx. 112 Sq. meters (1207 Sq. feet)



Total area: approx. 112 Sq. meters (1207 Sq. feet)  
For illustration purposes only - not to scale

[www.lpaplus.com](http://www.lpaplus.com)

IMPORTANT NOTICE - These particulars have been prepared in good faith and they are not intended to constitute part of an offer or contract. We have not performed a structural survey on this property and the services, appliances and specific fittings have not been tested. All photographs, measurements, floor plans and distances referred to are given as a guide and should not be relied upon.

**BUTLER & STAG**

☎ 01992 667666

🏠 4 Forest Drive, Theydon Bois, Essex, CM16 7EY

✉ [theydon@butlerandstag.com](mailto:theydon@butlerandstag.com)

[www.butlerandstag.uk](http://www.butlerandstag.uk)